

# Replatforming of Data Collection systems – LIS/LARA/OLDC

Alan Billingham  
Production and Quality Director

Employer Responsive Advisory Group – 16 June 2011

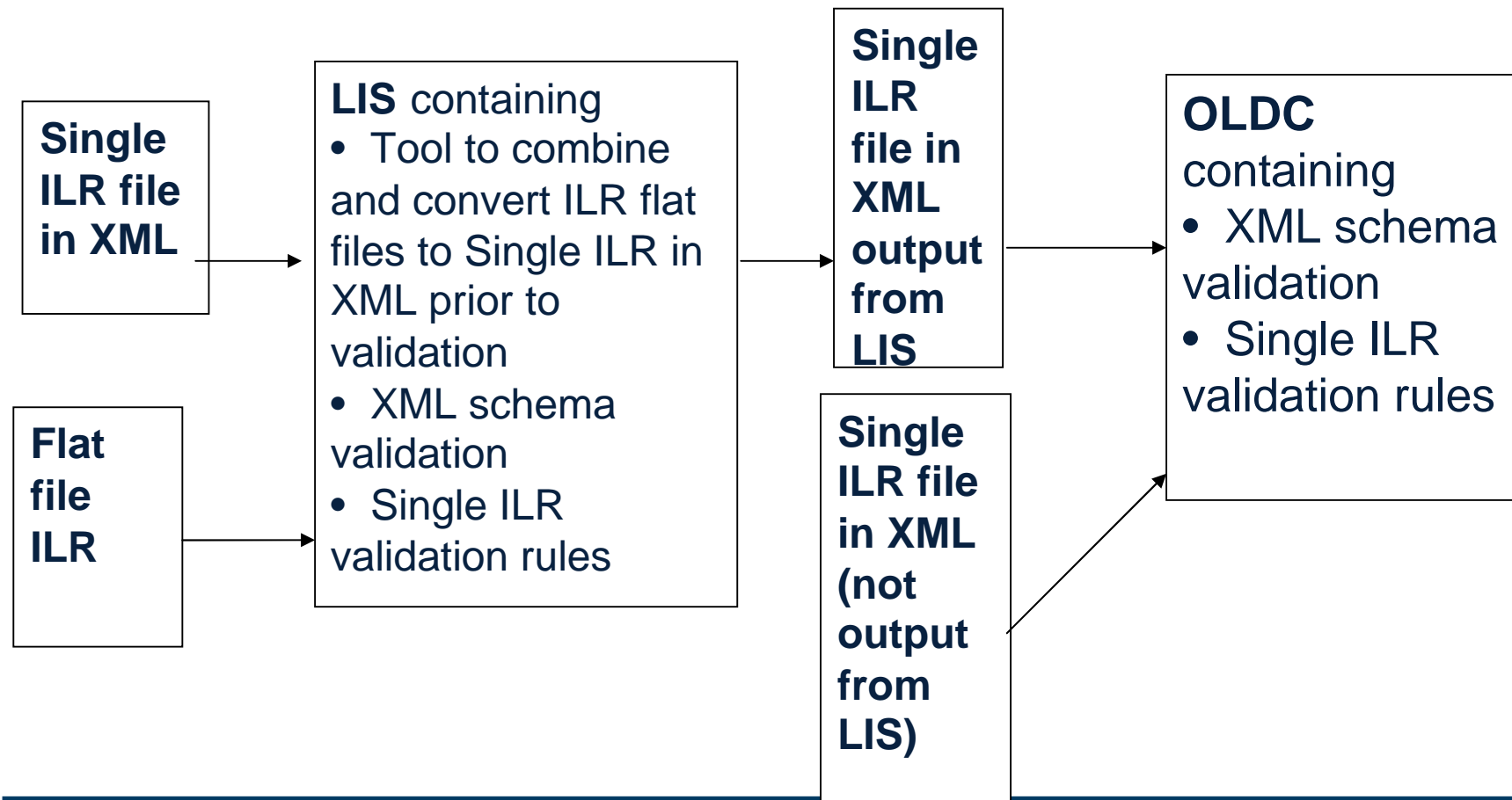
# Single ILR and XML



- To incorporate a revised, restructured ILR into the data collection process.
- Providers can only return data to the Data Service for 2011/12 in XML format.
- ILR flat file to XML converter tool - available in the Learner Information Suite (LIS) to combine and convert separate ILR flat files to a single ILR in XML format.

# Single ILR

## Data collection systems for 2011/12



# Where are we now?



- **LAD → LARA**
- **Learner Information Suite**
- **Online Data Collections system**
- **Strategic Replatforming – phase 2**

# LAD → LARA



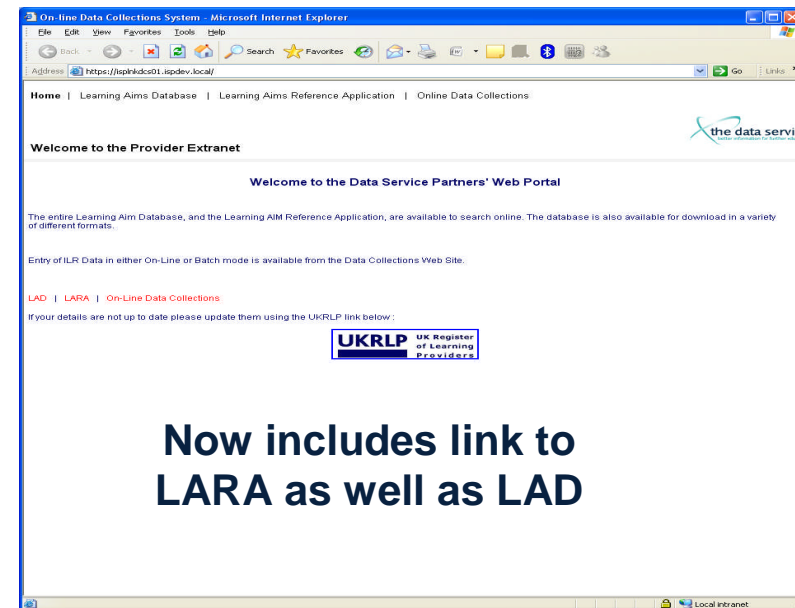
## LARA will be the repository for learning aims from 2011/12 onwards

- New database definition for LARA – LARA table and field definitions for 2011/12 document – draft published on **01 March 2011**.
- LARA structure will be based on LAD database.
- Data not relevant to the 11/12 data collection will be removed.
- New data will be added to cater for:
  - Changes to the Agencies' funding systems
  - Units as Learning Aims
  - More transparency in the progress of a Learning Aim
  - LARA download and search for 11/12 and future years will be available from a new location.

# LARA - key changes for 2011/12



- **Location** - <https://gateway.imservices.org.uk/sites/lara>
- **New look**
- **New platform/technology**



web: [www.thedataservice.org.uk](http://www.thedataservice.org.uk)

Service Desk tel: 0870 267 0001

# LARA - key changes for 2011/12



## Downloads

- Learning Aim downloads to support the LARA Table and Field Definitions for 2011/12. Formats Supported:
  - - **MDB format (Microsoft Access Database)**
    - **CSV format (Comma Separated Value)**
    - **PSV format (Pipe Separated Value Text File)**

# LARA - key changes for 2011/12



- The LARA Table and Field definitions for 2011/12 published on 01 March 2011 contains:
  - details of 27 new tables **within LARA that did not previously exist within LAD.**
  - 30 LAD tables have been **retained** within LARA and their purpose has remained unaltered. However, some of these tables have had fields removed or added.
  - A number of tables that existed in LAD (39) have been **removed** as they are no longer appropriate to the way information will be held for 2011/2012 within LARA or have been replaced with new data tables.

## Search

- **Search Mechanism** for Learning Aims 2011/12:
  - LARA will have similar facilities to those in the LAD allowing users to search for learning aims, view and download the results of a search, view and print details for learning aims and view frameworks and a list of aims within a framework.

**Please note:** lookups and quick search will be available in Release 2 – November 2011

## 2011/12 Learning Aims Funding data



- 16-18 Learner Responsive learning aims – now available in the LAD
- Adult Learner Responsive learning aims – now available in the LAD
- Employer Responsive Other– w/c 13 June
- Employer Responsive Apprenticeships – July 2011

# Learner Information Suite (LIS)



- **Conversion**
- **Amalgamation**
- **Processing of XML files**
- **Reports**

# Overview of LIS 19

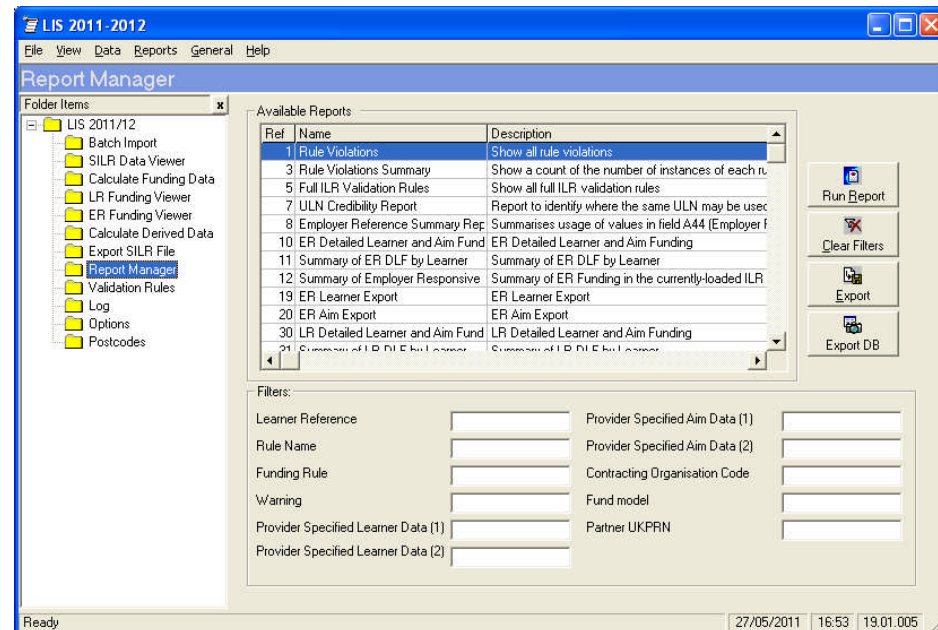


- ILR data for the 2011/12 academic year is required to be in XML format before being submitted to OLDC.
- The new LIS application will convert and amalgamate flat file format to produce the final ILR in the new XML format.
- The new LIS application has been adapted to accommodate the single ILR – changes to field names to reflect the single ILR.
- Amalgamation of A & B file types -users can select the required combination.
- The output of a single XML file will contain only one Provider ID.
- A flat-file goes through more stages such as validation, conversion to XML and schema verification. An XML file will only require schema verification.
- LIS reports - updated in line with any policy changes and will be published through two releases . Reports will accommodate the 2011/12 single ILR field names

# Reports in LIS 19

- Rule Violations
- Rule Violations Summary
- Full ILR Validation Rules
- Amalgamation Summary Report
- ER Detailed Learner and Aim Funding\*
- LR Detailed Learner and Aim Funding\*
- Summary of ER DLF by Learner
- Summary of LR DLF by Learner
- Summary of Employer Responsive Funding
- Summary of Learner Responsive Funding
- ER Learner Export
- LR Learner Export
- ER Learning Delivery Export
- LR Learning Delivery Export
- LR Funding Claim Report
- LR Funding Included and Excluded by ILR Export
- ER Indicative Volume and Cash Summary
- ER Indicative Occupancy List
- ULN Credibility Report
- Employer Reference Summary (Credibility) Report
- Enrolments by Funding Model and Source of Funding
- Access to HE Report

\* planned for Release 2 in October 2011



# OLDC



- replace batch load system to cater for single ILR in XML only
- revise all reports to support and reflect new ILR structure and data model
- revise all displays and screens to reflect single collection changes
- increase processing capability to reflect changes to ILR submissions due to use of XML
- introduce new business rules update capability to allow for quicker and easier deployment of change

# Changes to OLDC for 2011/12



- Provider On-line (POL) and Provider Batch systems – single ILR
- Batch and POL error / warnings and formats will be updated to reflect the 2011/12 ILR changes e.g. ILR field name changes. Error messages will not have any references to L and A codes.
- XML error messages – learning providers will need to contact their software suppliers to handle these
- Changes to Provider Funding reports – to reflect single ILR, funding rule changes, Single Adult Skills budget.

# BATCH Screens



Extranet Home | **Online DCS Home** | Provider Search | User Maintenance | Training & Support | Administration & Maintenance | Returns Timetable | PIMS | Logout

Online Data Collections System

Collections for ABINGDON AND WITNEY COLLEGE

To view your TIG Funding, your Credibility, and your ILR Summarisation Reports click [here](#)

The following is a list of available collections. To open a collection click on the collection reference

Active Collections | **Completed Collections** | Archived Collections

Ref	Title	Due Date	Status	Date Received
1112_BatchILR	Individualised Learner Record 2011 12 (Batch ILR)	18 Nov 2012		
PBASLSL01_1011	Individualised Learner Record 2010-11 (SL01 - Period 01)	01 Dec 2010		
PBILRER01_1011	Individualised Learner Record 2010-11 (ER01 - Period 01)	06 Sep 2010		
PBILRF01_1011	Individualised Learner Record 2010-11 (F01 - Period 01)	07 Dec 2010		
PBILRLR01_1011	Individualised Learner Record 2010-11 (LR01 - Period 01)	06 Dec 2010	Sent	29 Sep 2010
PBILRLR02_1011	Individualised Learner Record 2010-11 (LR02 - Period 02)	14 Feb 2011		
PBILRW01_1011	Individualised Learner Record 2010-11 (W01 - Period 01)	04 Sep 2010		
POLTPSER01_1011	Training Provider Statement 2010-11 (T01 - Period 01)	06 Sep 2010	Sent	24 Sep 2010
POLTPSW01_1011	Training Provider Statement 2010-11 (T01 - Period 01)	04 Sep 2010	Sent	24 Sep 2010

**This screen will show one collection only for 2011/12**

web: [www.thedata-service.org.uk](http://www.thedata-service.org.uk)

Service Desk tel: 0870 267 0001

# Migration



- Migration will be significantly different from previous years
- 2011/12 migration - ER or ESF SR data using the Provider Online system (POL) in 2010/11.
- The Data Service will not be migrating data for providers who send ER or ESF SR batch file returns in 2010/11.
- sub-contractors in 2011/12 - as a result of new minimum contract levels will not have their data migrated.
- **REMINDER:** providers that currently use POL for ER or ESF Short Record collections and who also send data for another collection type by ILR batch file will need to send all learner data for 2011/12 by **batch** return only in a single ILR file

# Timetable for delivery



## LARA

- LARA table and field definitions for 2011/12 document – draft published on **01 March 2011**.
- LARA mdb database with dummy data published on **23 May 2011** (example files in each of the 3 formats csv, access, pipe delineated).
- LARA table and field definitions for 2011/12 document – **Version 2** to be published **mid June** .
- LARA table and field definitions for 2011/12 document – final version to be published in **July** (dependant on successful testing).
- LARA live system by **July 2011**.
- **Release 2 - November 2011:**
  - **status of a learning aim**
  - **lookups and quick search**

## LIS

- LIS MDB database and guidance – draft published **25 March 2011**.
- LIS interface specification **20 May 2011**.
- LIS Beta **01 June 2011**.
- LIS Provider release **15 July 2011**
- LIS Release 2 ( Shadow Calcs) **November 2011**

## OLDC

- POL Providers data migration by **22 August 2011**
- OLDC live deployment by **22 August 2011**

# Strategic Replatforming



## Phase 2:

- Summer 2012
- Provider Information Management System (PIMS)
- LIS
- LARA
- OLDC

# Contact us:



**Service Desk: 0870 2670001**

**Email: [servicedesk@thedata-service.org.uk](mailto:servicedesk@thedata-service.org.uk)**

**[www.thedata-service.org.uk](http://www.thedata-service.org.uk)**

web: [www.thedata-service.org.uk](http://www.thedata-service.org.uk)

Service Desk tel: 0870 267 0001