

Appendix B

Document History

Version 3.0 published in July 2008, changes from version 2.0 are highlighted in blue.

Version 2.0 published in May 2008, changes from version 1.0 are highlighted in green.

Changes from the 2007/08 specification are highlighted in yellow.

Migration Specification for Employer Responsive ILR data collection and ESF short record data for 2008/09

- 1 This appendix describes the rules for migrating work based learning (WBL) and ESF short record format ILR data from 2007/08 to employer responsive funded ILR data and ESF short record, respectively, for 2008/09.
- 2 The data transformations indicated in this specification are written from the perspective that all fields are mapped to their new 08/09 values at the same time and are not processed sequentially. The mappings for the fields use the 07/08 values to determine the new 08/09 values.
- 3 This appendix has the following sections:
 - Section A describes the migration rules for employer responsive funded ILR data, which includes the learner and learning aim data sets
 - Section B describes the creation of a programme aim. This will be done in a separate and subsequent process once the other data sets have been migrated.
 - Section C describes the migration rules for ESF short record data.
 - Section D contains flowcharts that show in more detail rules A10, A14, A18 and A46 for employer responsive funded ILR data.
- 4 Learning aim and associated ESF data set records for learners who were directly ESF co-financed (where A10=70) under the previous 2000-2006 ESF programme will not be migrated to 2008/09. Only records with a new format project dossier number in field E22 will be valid in 2008/09.
- 5 Learning aim and associated ESF data set records for learners who are not directly ESF funded (for example, A10=40, 41, 42, 80 or 99) but that may have been used for match funding will be migrated. To allow these data to be migrated it will be necessary to replace the dossier number (field E22) with the null value, if the old project dossier number has been used.
- 6 A spreadsheet will be provided for transfers between providers or local LSCs that indicates which provider number and LSC number the data should be migrated to.

Entry to Employment (E2E)

- 7 Learners participating in E2E from 2008/09 will need to be recorded in the adult learner responsive collection as they will be funded from the 16-18 learner responsive funding stream. Therefore, all E2E learning aims currently recorded within the WBL ILR data, will NOT be migrated to the employer responsive 2008/09 ILR data. These are as follows:

- all learning aim records where the programme type field, A15 = 09. This will also involve removing the learner record where there is no learning aim data set remaining for that learner.

Section A

Migration of 2007/08 WBL providers data

8 The following learner and learning aim records should be migrated:

- all learner records which have at least one learning aim record where the actual end date field A31 = null or where the destination field, L39 = 93 or 94; and
- all learning aim records where the learning actual end date, field A31 = null; and
- all learning aim records where the learning actual end date, field A31 is not null and the learner has a least one open aim with the same Provider number A01, Learner reference number A03, Programme type A15 and sector framework code combination A26; and
- all learning aims records where L39 on the associated learner record = 93 or 94.

No.	Field Name	Migration rule	Notes
L01	Provider number	If not a transfer copy from 2007/08 otherwise set as per mapping spreadsheet	Where the provision has transferred mapping spreadsheet will be supplied.
L03	Learner reference number	Copy from 2007/08 unless this will lead to a duplicate L01/L03 combination, in which case a new Learner Reference Number should be generated.	
L04	Data set identifier code	Copy from 2007/08	
L05	Learning aim data sets	<p>Set to the number of aims migrated.</p> <p>Where a programme aim has been generated for a learner this number will need to be increased by the number of programme aims, generally 1.</p> <p>If A15 = 2, 3, or 10 then set L05 to the number of aims migrating +1.</p>	<p>Where L05 changes as a result of migration fields A05 and E05 on the associated record and ESF dataset (if present) will need to be re-calculated.</p> <p>The number of learning aim data sets will need to increase by 1 to include the additional programme aim where applicable.</p>

No.	Field Name	Migration rule	Notes
L06	ESF co-financing data sets	Copy from 2007/08	
L07	HE data sets	Copy from 2007/08	
L08	Deletion flag	Copy from 2007/08	
L09	Learner surname/family name	Copy from 2007/08	
L10	Learner forenames	Copy from 2007/08	
L11	Date of birth	Copy from 2007/08	
L12	Ethnicity	Copy from 2007/08	
L13	Sex	Copy from 2007/08	
L14	Learning difficulties and / or disabilities and / or health problems	Copy from 2007/08	
L15	Disability	Copy from 2007/08	
L16	Learning difficulty	Copy from 2007/08	
L17	Home postcode	Copy from 2007/08	
L18	Address line 1	Copy from 2007/08	
L19	Address line 2	Copy from 2007/08	
L20	Address line 3	Copy from 2007/08	
L21	Address line 4	Copy from 2007/08	
L22	Current Postcode	Copy from 2007/08	
L23	Telephone number	Copy from 2007/08	
L24	Country of domicile	Set to mapped 2 letter alphabetic code as listed in appendix D to the ILR Specification.	This field changed to 2 letter alphabetic code from 2008/09
L25	LSC number of funding LSC	If not a transfer copy from 2007/08 otherwise set as per mapping spreadsheet	
L26	National insurance number	Copy from 2007/08	
L27	Restricted use indicator	Copy from 2007/08	
L28	Eligibility for enhanced funding (occurs 2)	If L28 = 12, 13 or null then set to 99. Otherwise copy from 2007/08.	Increased validation added on this field, and code 13 removed.

No.	Field Name	Migration rule	Notes
L34	Learner support reason – other (occurs 4)	If L34a, L34b, L34c or L34d = 01, then set to 99. Otherwise copy from 2007/08.	Code 01 removed from 2008/09.
L35	Prior attainment level	Copy from 2007/08	
L36	Learner status on last working day before learning	If L36 = 02 then set to 03. Otherwise copy from 2007/08.	Code 02 was removed from 2008/09
L37	Employment status on first day of learning	Copy from 2007/08	
L38	Blank Field	Copy from 2007/08	
L39	Destination	Copy from 2007/08	
L40	National learner monitoring (occurs 2)	Copy from 2007/08	
L41	Local learner monitoring (occurs 2)	Copy from 2007/08	
L42	Provider specified learner data (occurs 2)	Copy from 2007/08	
L44	NES delivery LSC number	If the LSC number from the Mapping Spreadsheet for 2007/08 <>002 and 2008/09 = 002 then set L44 to the 2007/08 LSC number from the mapping spreadsheet. If the LSC number from the Mapping Spreadsheet for 2007/08 = 002 and 2008/09 <> 002 then set L44 = Null. Otherwise copy from 2007/08.	
L45	Unique learner number	If L45 = 0000000000, then set L45 to 9999999999. Otherwise copy from 2007/08.	Unique learner number mandatory for employer responsive providers from 2008/09
L46	UK Provider reference number	If not a transfer copy from 2007/08. Otherwise set to the UKPRN from PIMS to match the UPIN on the mapping spreadsheet.	

No.	Field Name	Migration rule	Notes
L47	Current Employer status	Copy from 2007/08	
L48	Date Employment Status Changed	Copy from 2007/08	
L49	Discretionary learner support type (occurs 4)	Set to null.	This is a new field for learner responsive only, and therefore requires null value.

Main Aim and Other Learning Aims

No.	Field Name	Migration rule	Notes						
A01	Provider number	If not a transfer Copy from 2007/08 otherwise set as per mapping spreadsheet.	Where the provision has transferred mapping spreadsheet will be supplied.						
A02	Contract / Allocation type	Copy from 2007/08							
A03	Learner reference number	Copy from 2007/08 unless this will lead to a duplicate L01/L03 combination, in which case a new Learner Reference Number should be generated							
A04	Data set identifier code	Copy from 2007/08.							
A05	Learning aim data set sequence	<p>Calculate so that the sequence number starts at 1 for the first aim and increases to the value of L05 for the last aim.</p> <p>The aims should be sequenced in the same order as they were in 2007/08* and where they are the same number of aims in 2008/09 as in 2007/08 the sequence numbers for individual aims are not expected to change.</p> <p>*For example</p> <table border="0"> <tr> <td>Seq No</td> <td>Seq No</td> </tr> <tr> <td>2007/08</td> <td>2008/09</td> </tr> <tr> <td>02</td> <td>01</td> </tr> </table>	Seq No	Seq No	2007/08	2008/09	02	01	Where an ESF data set is present E05 will need to be recalculated at the same time and set to the same value as A05 on the associated learning aim
Seq No	Seq No								
2007/08	2008/09								
02	01								

No.	Field Name	Migration rule	Notes
		03 02 05 03 06 04	
A06	ESF co-financing data sets	Copy from 2007/08	
A07	HE data sets	Copy from 2007/08	
A08	Data set format	Copy from 2007/08	
A09	Learning aim reference	Copy from 2007/08	
A10	LSC funding stream	<p>Refer to Flowchart 1.</p> <p>If A10 = 41 or 42 then set to 45.</p> <p>If A10 = 40 and A15 = 02, 03, or 10 then set to 46. Otherwise set to 45.</p> <p>If A10 = 80 AND LEARNING_AIM_TYPE on LAD for learning aim reference in field A09 = 1437 OR A46a or A46b = 27, 66 or 83 then set to 45.</p> <p>If A10 = 60 then set to 45.</p> <p>Otherwise copy from 2007/08.</p>	<p>Employability Skills Programme (ESP) learning aims will become employer responsive funded in 2008/09.</p> <p>TtG funded learning aims in 2008/09 will become employer responsive. Learners that were TtG funded in 07/08 will be identified in field A46.</p>
A14	Reason for full funding/co-funding of learning aim	<p>Refer to Flowchart 2.</p> <p>If (A10=40, 41 or 42 and AD01=1) or (If A10=40, 41 or 42 and L28a or L28b = (14 or 15)) then set A14=01</p>	<p>New field from 2008/09.</p> <p>Set value for apprenticeships and other WBL funded learning aims</p> <p><i>Note: AD01 is a derived variable in the 2007/08 validation rules which determines the learner's age at the start of the programme.</i></p>

No.	Field Name	Migration rule	Notes
A14 (cont)	Reason for full funding/co-funding of learning aim	<p>IFA10=60 AND (SKILLS_FOR_LIFE in ALL_ANNUAL_VALUES table in LAD for learning aim reference in field A09 =Y) AND (SKILLS_FOR_LIFE_TYPE_CODE in ALL_ANNUAL_VALUES table in LAD for learning aim reference in field A09 <> 03, 04, 07, 10, 17, X or U) set A14=09</p> <p>IF A10=60 AND (SKILLS_FOR_LIFE in ALL_ANNUAL_VALUES table in LAD for learning aim reference in field A09 =Y) AND (SKILLS_FOR_LIFE_TYPE_CODE in ALL_ANNUAL_VALUES table in LAD for learning aim reference in field A09 = 03, 04, 07, 10 or 17, X or U) set A14=99</p> <p>IF A10=60 and (A46a <>63 or A46b<>63) and SKILLS_FOR_LIFE in ALL_ANNUAL_VALUES table in LAD for learning aim reference in field A09 =N) then set A14=22</p> <p>IF A10=60 and (A46a=63 or A46b=63) and (SKILLS_FOR_LIFE in ALL_ANNUAL_VALUES table in LAD for learning aim reference in field A09 =N) set A14=99</p> <p>If A10 = 80 and A46a or A46b = 27, 66 or 83) and SKILLS_FOR_LIFE_TYPE_CODE in ALL_ANNUAL_VALUES table in LAD for learning aim reference in field A09 <> 03, 04, 07, 10, 17, X or U then set A14=09</p>	<p>Set value for Skills for Life (not ESOL) Train to Gain aim</p> <p>Set value for ESOL Skills for Life Train to Gain aims</p> <p>Set value for non Skills for Life Train to Gain aims (not L3 trials)</p> <p>Set value for non Skills for Life Level 3 Trials Train to Gain aim</p> <p>Set value for Skills for Life ESP aim</p>

No.	Field Name	Migration rule	Notes
		<p>If A10 = 80 AND LEARNING_AIM_TYPE on LAD for learning aim reference in field A09 = 1437 then set A14=28</p> <p>Otherwise set A14=99.</p>	Set value for Employability award ESP aim
A15	Programme type	<p>If A15 = 04, 05 or 06 or 07 then set to 99.</p> <p>A15 can only be a valid code of 02, 03, 10 – 14 or 99. If A15 does not equal a valid code, set to 99.</p> <p>Otherwise copy from 2007/08.</p>	NVQ level codes within this field have been removed. Increased validation has been added for 2008/09 to only use codes applicable to employer responsive collections.
A16	Programme entry route	Copy from 2007/08	
A18	Main delivery method	<p>Refer to Flowchart 3.</p> <p>If A10 = 60 and SKILLS_FOR_LIFE_TYPE_CODE in ALL_ANNUAL_VALUES table in LAD for learning aim reference in field A09 <> 4, X or U then set A18 to 23.</p> <p>If A10=80 and A46a = 27, 66 or 83 or A46b = 27, 66 or 83 then set A18 to 22</p> <p>If A10=80 and LEARNING_AIM_TYPE on LAD for learning aim reference in field A09 = 1437 then set A18 to 22.</p> <p>Otherwise copy from 2007/08</p>	<p>Skills for life learning aims, which are TtG funded in 07/08 should be coded as lower rate in field A18.</p> <p>Employability Skills aims will be funded at the higher TtG rate in 2008/09</p>
A23	Delivery location postcode	Copy from 2007/08	
A24	Occupation relating to learning aim	Copy from 2007/08	
A26	Framework code	Copy from 2007/08	
A27	Learning start date	Copy from 2007/08	
A28	Learning planned end date	Copy from 2007/08	

No.	Field Name	Migration rule	Notes
A31	Learning actual end date	Copy from 2007/08	
A32	Guided learning hours	Copy from 2007/08	
A34	Completion status	Copy from 2007/08	
A35	Learning outcome	Copy from 2007/08	
A36	Learning outcome grade	Set to three spaces.	This is a new field for employer responsive providers
A37	Number of units completed	Copy from 2007/08	
A38	Number of units to achieve full qualification	Copy from 2007/08	
A40	Achievement date	Copy from 2007/08	
A43	Blank field	Set to eight zeros	This field has been removed from 2008/09
A44	Employer identifier	Copy from 2007/08	
A45	Workplace location postcode	Copy from 2007/08	
A46	National learning aim monitoring (occurs 2)	<p>Refer to Flowchart 4.</p> <p>If A10 = 60 and A46a = 99 then set A46a to 100 and set A46b to 999.</p> <p>If A10 = 60 and A46a <> 99 and A46b = 99 then copy value in A46a after adding leading zero (if required) and set A46b to 100.</p> <p>IF A10=60 and A46a = (84 or 63) or A46b = (84 or 63) then copy values in both A46a and in A46b after adding a leading zero (if required).</p> <p>Otherwise if A10=60 set A46a to 100 and A46b to 999</p> <p>If A46a or A46b = 75, 77, 80 or 99 then set to 999.</p>	<p>Train to Gain learning aims from 2007/08 will be identified using A46</p> <p>Field format changed to 3 digit numeric</p>

No.	Field Name	Migration rule	Notes
		Otherwise copy from 2007/08 and add leading zero to codes from 17 to 98 where required to convert to a 3 digit numeric format for A46a and A46b.	
A47	Local learning aim monitoring (occurs2)	Copy from 2007/08	
A48	Provider specified learning aim data (occurs 2)	Copy from 2007/08	
A49	Special projects and pilots	Copy from 2007/08	
A50	Reason learning ended	If A50= 20, 21, 23 or 24 set to 98 else copy from 2007/08. IF A50=null and A31=null then set to 96 IF A50=null and A31 is not null then set to 97.	The reason learning ended cannot be null for employer responsive funded provision
A51a	Proportion of funding remaining	Copy from 2007/08	
A53	Additional learning needs	If A53 = null then set to 97. Otherwise copy from 2007/08	
A54	Broker contract number	Copy from 2007/08	
A55	Unique learner number	If A55 = 0000000000 then set to 9999999999. Otherwise copy from 2007/08. Set to L45	Field mandatory for providers from 2008/09.
A56	UK Provider reference number	Set to L46	
A58	ASL provision type	Set to null value	New field, not applicable for ER collection
A59	Planned credit value	Set to 000	New field for ER collection
A60	Credits achieved	Set to 000	New field for ER collection

No.	Field Name	Migration rule	Notes												
E01	Provider number	If not a transfer Copy from 2007/08 otherwise set as per mapping spreadsheet	Where the provision has transferred mapping spreadsheet will be supplied.												
E02	Contract / Allocation type	Copy from 2007/08													
E03	Learner reference number	Copy from 2007/08 unless this will lead to a duplicate L01/L03 combination, in which case a new Learner Reference Number should be generated													
E04	Data set identifier code	Copy from 2007/08													
E05	Learning aim data set sequence	<p>Calculate so that the sequence number start at 1 for the first aim and increases to the value of L05 for the last aim.</p> <p>The aims should be sequenced in the same order as they were in 2007/08* and where they are the same number of aims in 2008/09 as in 2007/08 the sequence numbers for individual aims are not expected to change.</p> <p>*For example</p> <table border="0"> <tr> <td>Seq No</td> <td>Seq No</td> </tr> <tr> <td>2007/08</td> <td>2008/09</td> </tr> <tr> <td>02</td> <td>01</td> </tr> <tr> <td>03</td> <td>02</td> </tr> <tr> <td>05</td> <td>03</td> </tr> <tr> <td>06</td> <td>04</td> </tr> </table> <p>This should be done at the same time as field A05 is calculated and should match the value in A05 on the associated learning aim.</p>	Seq No	Seq No	2007/08	2008/09	02	01	03	02	05	03	06	04	
Seq No	Seq No														
2007/08	2008/09														
02	01														
03	02														
05	03														
06	04														

No.	Field Name	Migration rule	Notes
E06	ESF co-financing data set sequence	Copy from 2007/08	
E07	HE data sets	Copy from 2007/08	
E08	Date started ESF co-financing	Copy from 2007/08	
E09	Planned end date for ESF co-financing	Copy from 2007/08	
E10	Date ended ESF co-financing	Copy from 2007/08	
E11	Industrial sector of learner's employer	Set to 98	
E12	Employment status on day before starting ESF project	If E12 = 05 then set to 98. Otherwise copy from 2007/08	Code 05 removed from 2008/09.
E13	Learner's employment status	Set to 98	
E14	Length of unemployment before starting ESF project	Copy from 2007/08	
E15	Type and size of learner's employer	Set to 98	
E16	Addressing gender stereotyping (occurs 5)	Space fill	
E17	Blank field	Space fill	
E18	Delivery mode (occurs 4)	Space fill	
E19	Support measures to be accessed by the learner (occurs 5)	Space fill	
E20	Learner background (occurs 3)	Set to 98	
E21	Support measures for learners with disabilities	Zero fill	

No.	Field Name	Migration rule	Notes
E22	Project dossier number	If A10 is not 70 and E22 not = Spaces AND ([character 6 of E22 not = 'L']) then set to null value of 9 spaces. Otherwise copy from 2007/08	
E23	Local project number	Copy from 2007/08	
E24	Unique learner number	Copy from 2007/08. Set to L45	
E25	UK Provider reference number	Set to L46	

Section B: Creation of a Programme Aim

- 9 From 2008/09 all apprenticeship programmes within the employer responsive data collection will need to have a programme aim recorded as part of the learner's programme. As part of migration, a programme aim will need to be created for all continuing learners.
- 10 Where a learner is following an apprenticeship programme, this is where, the programme type field, field A15 is set to 02 (Advanced apprenticeship), 03 (Apprenticeship) or 10 (Higher level apprenticeship), a programme aim should be created using the learning aim code ZPROG001.
- 11 For each apprenticeship programme, there will be at least one aim, this will be where the funding stream field, field A10 for 2008/09 will be 45 or 46. All aims within the programme will have the same value in the sector framework code field, field A26.
- 12 The component learning aims that form the programme, will be linked to the programme aim by use of the programme type field, field A15 and framework code field, field A26. The funding stream for the programme aim and subsidiary aims will be A10=45 (or 99 for non-LSC funded subsidiary aims). The main aim of the programme will use funding stream A10=46.
- 13 The data for the programme aim fields will in most cases, be copied from the data within the current main aim fields, where A10 = 46 in 2008/09. There should only be one open main aim (ie. where A31=null) and this should be the aim used. Where there is no open main aim, use the learning aim with the earliest start date for the aims within the programme*.
- 14 Details on how each field should be completed are included below:

Programme Aim

No.	Field Name	Migration rule	Notes
A01	Provider number	Copy from main aim (where available)* within the programme for 2007/08 Copy from L01	
A02	Contract / Allocation type	Copy from main aim (where available)*	
A03	Learner reference number	Copy from main (where available)* aim within the programme for 2007/08 Copy from L03	
A04	Data set identifier code	Set to 35.	New code added to identify programme aims within the learning aim data set.

No.	Field Name	Migration rule	Notes
A05	Learning aim data set sequence	Use the next seq. no. following the last learning aim for the learner	
A06	ESF co-financing data sets	Set to 00	
A07	HE data sets	Set to 00	
A08	Data set format	Set to 2	
A09	Learning aim reference	Set to ZPROG001	
A10	LSC funding stream	Set to 45	
A14	Reason for full funding/co-funding of learning aim	Copy from main aim (where available)*	New field from 2008/09
A15	Programme type	Copy from main aim (where available)* A15 can only be a valid code of 02, 03 or 10.	
A16	Programme entry route	Copy from the aim with the earliest start date of all aims within the programme for 2007/08, with the same A03, A15, A26.	
A18	Main delivery method	Set to 00	
A23	Delivery location postcode	Copy from main aim (where available)*	
A24	Occupation relating to learning aim	Set to null value	
A26	Framework code	Copy from main aim (where available)*	
A27	Learning start date	Copy from the aim with the earliest start date of all aims within the programme for 2007/08, with the same A03, A15, A26.	
A28	Learning planned end date	Copy from the aim with the latest end date of all aims within the programme for 2007/08, with the same A03, A15, A26.	
A31	Learning actual end date	Set to null value.	

No.	Field Name	Migration rule	Notes
A32	Guided learning hours	Set to null value	
A34	Completion status	Set to 1	
A35	Learning outcome	Set to 9	
A36	Learning outcome grade	Set to null value.	This is a new field for employer responsive providers
A37	Number of units completed	Set to 00	
A38	Number of units to achieve full qualification	Set to 00	
A40	Achievement date	Set to null value	
A43	Blank field	Zero fill	This field has been removed from 2008/09
A44	Employer identifier	Set to null value	
A45	Workplace location postcode	Set to null value	
A46	National learning aim monitoring (occurs 2)	Copy from the main aim within the programme for 2007/08 and add a leading zero to all codes to convert to a 3 digit numeric format. If A46 = 99 set to 999 If A46a or A46b = 75, 77 or 80 then set to 999. Copy from main aim (where available)*	Field format changed to 3 digit numeric
A47	Local learning aim monitoring (occurs2)	Set to null value	
A48	Provider specified learning aim data (occurs 2)	Set to null value	
A49	Special projects and pilots	Set to null value	
A50	Reason learning ended	Set to 96	
A51a	Proportion of funding remaining	Copy from main aim (where available)*	
A53	Additional learning	Set to 97	

No.	Field Name	Migration rule	Notes
	needs		
A54	Broker contract number	Set to null value	
A55	Unique learner number	Copy from main aim within the programme for 2007/08. If A55 = 0000000000 then set to 9999999999. Set to L45	
A56	UK Provider reference number	Set to L46	
A59	Planned credit value	Set to 000	
A60	Credits achieved	Set to 000	

Section C: Migration of ESF SR data.

- 14 This section covers the migration rules for ESF short record data.
- 15 All learner records and learning aim records where the learning actual end date, field A31 = null, for learners on the new 2007/13 ESF programme which commenced in January 2008 will be migrated into 2008/09.
- 16 New ESF programme records are identified by the project dossier number in field E22. All learner and learning aim records where the 6th Character of the project dossier number = "L" and where A31 = null should be migrated.
- 17 Any learning aims that were ESF funded (where A10=70) under the old 2000-2006 programme will not be migrated.
- 18 Learning aims that are not ESF funded (where A10=10 or 80) should be migrated. To allow these data to be migrated it may be necessary to replace the dossier number (field E22) with the null value, if the old dossier number has been used.

No.	Field Name	Migration Rule	Notes
L01	Provider number	If not a transfer copy from 2007/08 otherwise set as per mapping spreadsheet	Where the provision has transferred mapping spreadsheet will be supplied
L03	Learner reference number	Copy from 2007/08 unless this will lead to a duplicate L01/L03 combination, in which case a new Learner Reference Number should be generated	
L04	Data set identifier code	Copy from 2007/08	
L05	Learning aim data sets	Set to the number of aims migrated.	Where L05 changes as a result of migration fields A05 and E05 on the associated record and ESF dataset will need to be re-calculated
L06	ESF co-financing data sets	Copy from 2007/08	
L07	HE data sets	Copy from 2007/08	
L08	Deletion flag	Copy from 2007/08	
L09	Learner surname/family name	Copy from 2007/08	
L10	Learner forenames	Copy from 2007/08	

No.	Field Name	Migration Rule	Notes
L11	Date of birth	Copy from 2007/08	
L12	Ethnicity	Copy from 2007/08	
L13	Sex	Copy from 2007/08	
L14	Learning difficulties and / or disabilities and / or health problems	Copy from 2007/08	
L15	Disability	If L14 = 1 or 9 then set L15 to 99. If L14 = 2 then set L15 to 98.	New field for ESF SR.
L16	Learning difficulty	If L14 = 1 or 9 then set L16 to 99. If L14 = 2 then set L16 to 98.	New field for ESF SR.
L17	Home postcode	Copy from 2007/08	
L18	Address line 1	Copy from 2007/08	
L19	Address line 2	Copy from 2007/08	
L20	Address line 3	Copy from 2007/08	
L21	Address line 4	Copy from 2007/08	
L23	Telephone number	Copy from 2007/08	
L25	LSC number of funding LSC	If not a transfer copy from 2007/08 otherwise set as per mapping spreadsheet	
L27	Restricted use indicator	Copy from 2007/08	
L35	Prior attainment level	Copy from 2007/08	
L39	Destination	Copy from 2007/08	
L41	Local learner monitoring (occurs 2)	Copy from 2007/08	
L42	Provider specified learner data (occurs 2)	Copy from 2007/08	
L45	Unique learner number	Copy from 2007/08	
L46	UK Provider reference number	If not a transfer copy from 2007/08. Otherwise set to the UKPRN from PIMS to match the UPIN on the mapping spreadsheet.	

No.	Field Name	Migration Rule	Notes
L49	Discretionary learner support type	Set to null value	This is a new field for learner responsive only and therefore requires null value.

No.	Field Name	Migration rule	Notes												
A01	Provider number	If not a transfer Copy from 2006/07 otherwise set as per mapping spreadsheet.	Where the provision has transferred mapping spreadsheet will be supplied.												
A03	Learner reference number	Copy from 2007/08 unless this will lead to a duplicate L01/L03 combination, in which case a new Learner Reference Number should be generated													
A04	Data set identifier code	Copy from 2007/08													
A05	Learning aim data set sequence	<p>Calculate so that the sequence number start at 1 for the first aim and increases to the value of L05 for the last aim.</p> <p>The aims should be sequenced in the same order as they were in 2007/08* and where they are the same number of aims in 2008/09 as in 2007/08 the sequence numbers for individual aims are not expected to change.</p> <p>*For example</p> <table border="0"> <tr> <td>Seq No</td> <td>Seq No</td> </tr> <tr> <td>2007/08</td> <td>2008/09</td> </tr> <tr> <td>02</td> <td>01</td> </tr> <tr> <td>03</td> <td>02</td> </tr> <tr> <td>05</td> <td>03</td> </tr> <tr> <td>06</td> <td>04</td> </tr> </table>	Seq No	Seq No	2007/08	2008/09	02	01	03	02	05	03	06	04	Field E05 on the associated ESF dataset will need to be recalculated at the same time and set to the same value as A05 on the associated learning aim
Seq No	Seq No														
2007/08	2008/09														
02	01														
03	02														
05	03														
06	04														
A06	ESF co-financing data sets	Copy from 2007/08													

No.	Field Name	Migration rule	Notes
A07	HE data sets	Copy from 2007/08	
A08	Data set format	Copy from 2007/08	
A09	Learning aim reference	Copy from 2007/08	
A10	LSC funding stream	Copy from 2007/08	
A23	Delivery location postcode	Copy from 2007/08	
A24	Occupation relating to learning aim	Set to null value	
A27	Learning start date	Copy from 2007/08	
A28	Learning planned end date	Copy from 2007/08	
A31	Learning actual end date	Copy from 2006/07	
A34	Completion status	Copy from 2007/08	
A35	Learning outcome	Copy from 2007/08	
A36	Learning outcome grade	Set to three spaces	This is a new field for ESF SR
A46	National learning aim monitoring (occurs 2)	If A46a or A46b = 75, 77, 80 or 99 then set to 999. Otherwise copy from 2007/08 and add leading zero to codes from 17 to 98 where required to convert to a 3 digit numeric format for A46a and A46b. If A46a or A46b = 99 set to 999.	Field format changed to 3 digit numeric
A47	Local learning aim monitoring (occurs2)	Copy from 2007/08	
A48	Provider specified data (occurs 2)	Copy from 2007/08	
A49	Special projects and pilots	Copy from 2007/08	
A55	Unique learner number	Copy from 2007/08 Set to L45	
A56	UK Provider reference number	Set to L46	
A58	ASL provision type	Set to 99	New field for ESF SR collection

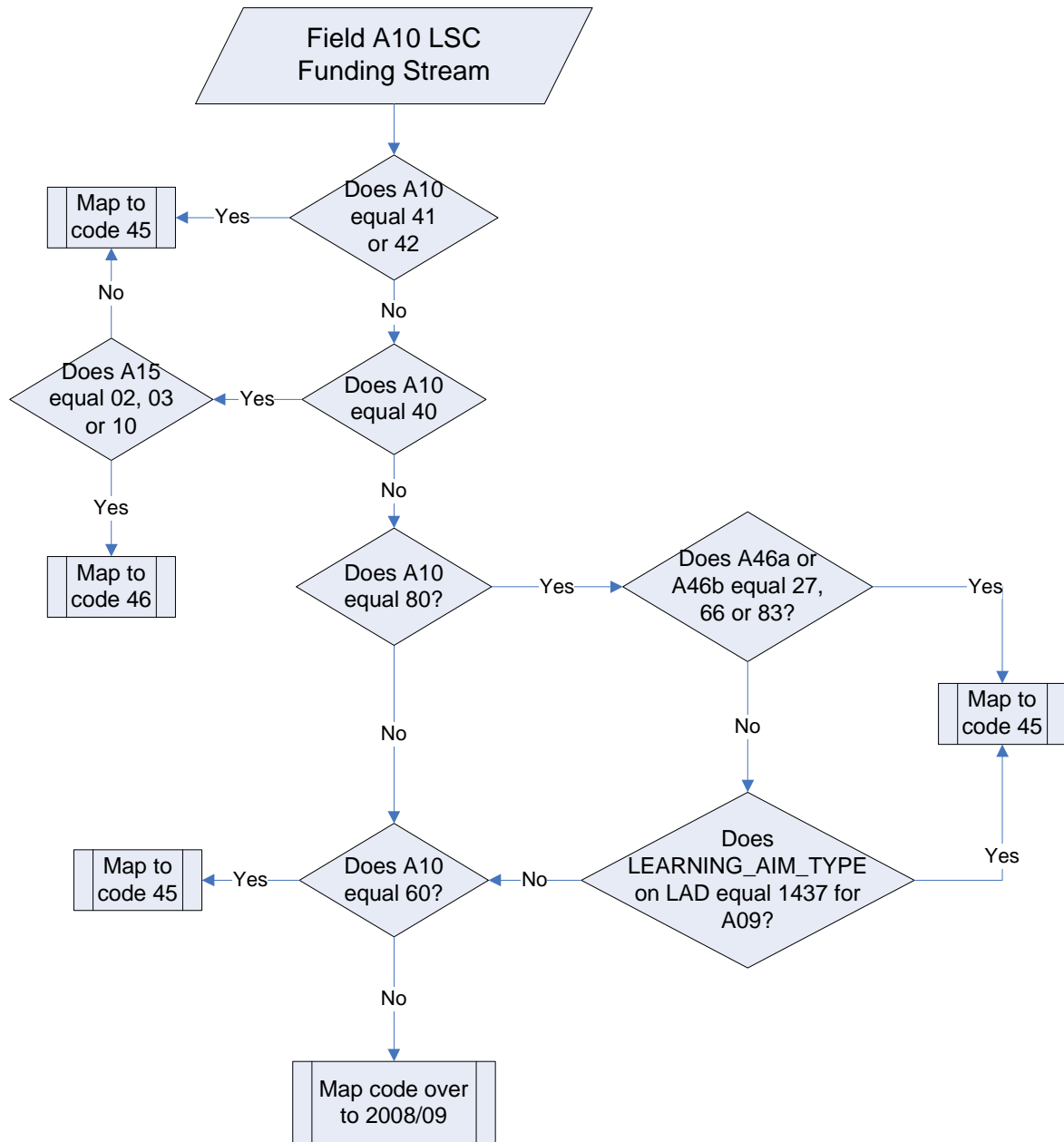
No.	Field Name	Migration rule	Notes
A59	Planned credit value	Set to 000	New field for ESF SR collection
A60	Credits achieved	Set to 000	New field for ESF SR collection

No.	Field Name	Migration rule	Notes												
E01	Provider number	If not a transfer Copy from 2007/08 otherwise set as per mapping spreadsheet	Where the provision has transferred mapping spreadsheet will be supplied.												
E02	Contract / Allocation type	Copy from 2007/08													
E03	Learner reference number	Copy from 2007/08 unless this will lead to a duplicate L01/L03 combination, in which case a new Learner Reference Number should be generated													
E04	Data set identifier code	Copy from 2007/08													
E05	Learning aim data set sequence	<p>Calculate so that the sequence number start at 1 for the first aim and increases to the value of L05 for the last aim.</p> <p>The aims should be sequenced in the same order as they were in 2007/08* and where they are the same number of aims in 2008/09 as in 2007/08 the sequence numbers for individual aims are not expected to change.</p> <p>*For example</p> <table border="0"> <tr> <td>Seq No</td> <td>Seq No</td> </tr> <tr> <td>2007/08</td> <td>2008/09</td> </tr> <tr> <td>02</td> <td>01</td> </tr> <tr> <td>03</td> <td>02</td> </tr> <tr> <td>05</td> <td>03</td> </tr> <tr> <td>06</td> <td>04</td> </tr> </table>	Seq No	Seq No	2007/08	2008/09	02	01	03	02	05	03	06	04	
Seq No	Seq No														
2007/08	2008/09														
02	01														
03	02														
05	03														
06	04														

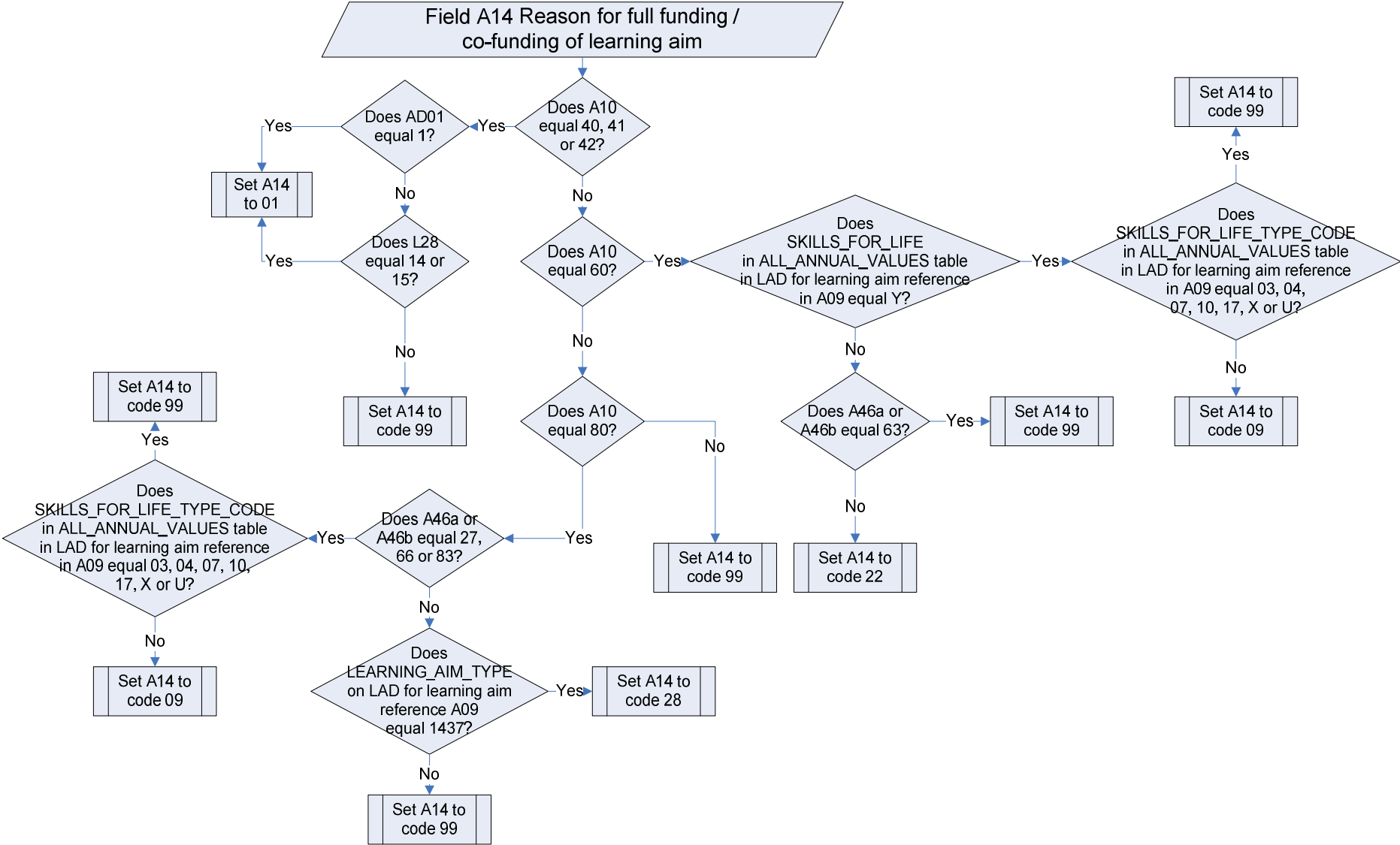
No.	Field Name	Migration rule	Notes
		This should be done at the same time as field A05 is calculated and should match the value in A05 on the associated learning aim.	
E06	ESF co-financing data set sequence	Copy from 2007/08	
E07	HE data sets	Copy from 2007/08	
E08	Date started ESF co-financing	Copy from 2007/08	
E09	Planned end date for ESF co-financing	Copy from 2007/08	
E10	Date ended ESF co-financing	Set to null value	
E11	Industrial sector of learner's employer	Set to 98	
E12	Employment status on day before starting ESF project	If E12 = 05 then set to 98. Otherwise copy from 2007/08.	Code 05 removed.
E13	Learner's employment status	Set to 98	
E14	Length of unemployment before starting ESF project	Copy from 2007/08	
E15	Type and size of learner's employer	Set to 98	
E16	Addressing gender stereotyping (occurs 5)	Set to null value	
E17	Blank field	Set to null value	
E18	Delivery mode (occurs 4)	Set to null value	
E19	Support measures to be accessed by the learner (occurs 5)	Set to null value	
E20	Learner background (occurs 3)	Set to 98	

No.	Field Name	Migration rule	Notes
E21	Support measures for learners with disabilities	Set to null value	
E22	Project dossier number	If A10 is not 70 and E22 not = Spaces AND ([character 6 of E22 not = 'L']) then set to null value of 9 spaces. Otherwise copy from 2007/08	
E23	Local project number	Copy from 2007/08	
E24	Unique learner number	Copy from 2007/08. Set to L45	
E25	UK Provider reference number	Set to L46	

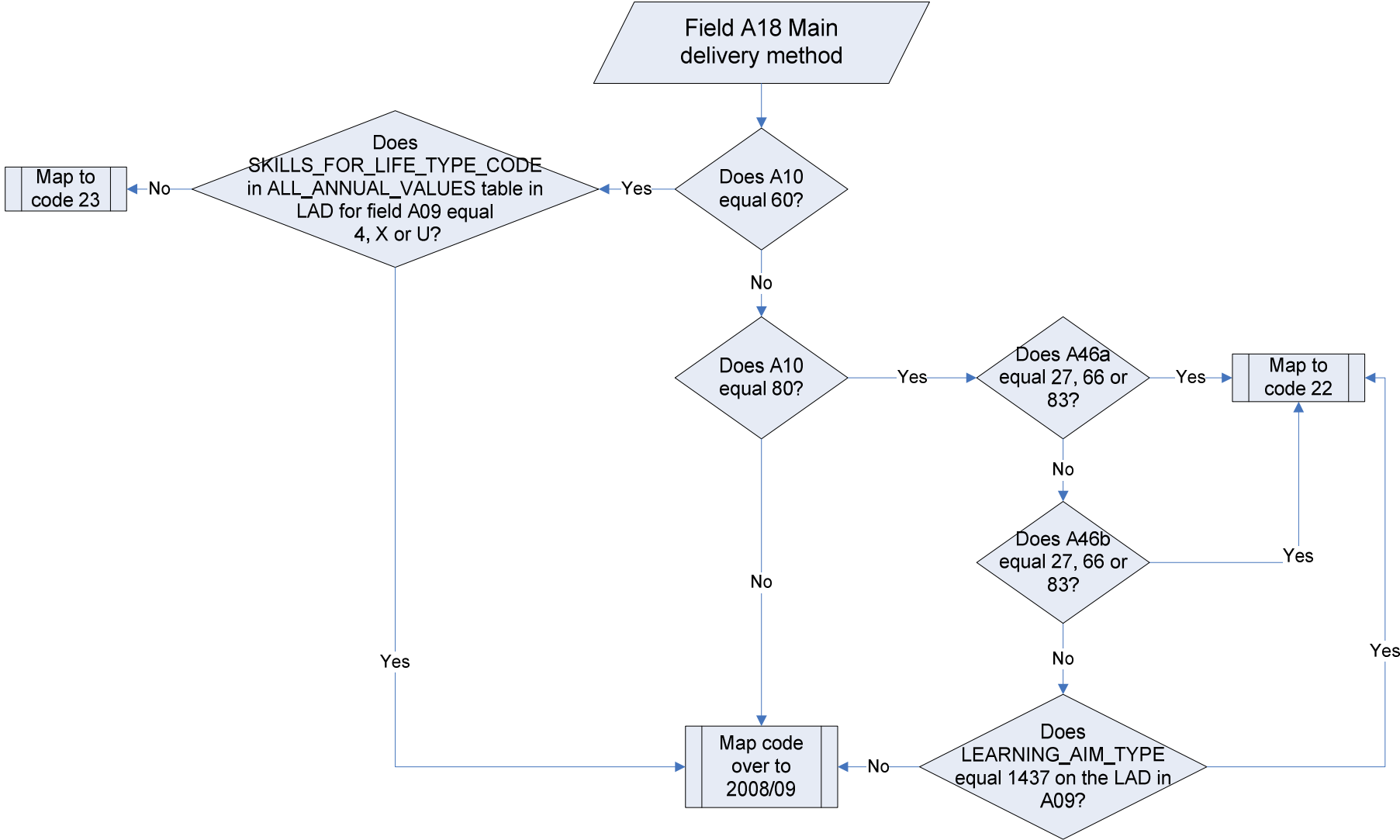
Section D
Flowchart 1.



Flowchart 2.



Flowchart 3.



Flowchart 4.

