

Single Individualised Learner Record

Lisa Macdougall – Data Specification Manager

the
informatⁱon
authority

setting data standards
for further education

Summary

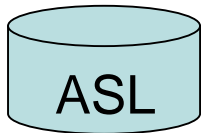
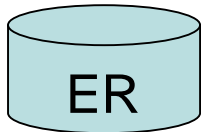
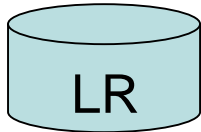
- a single restructured learner record in XML (single ILR)
- progress
- implementation
- key messages for providers
- future development

A single restructured learner record in XML format

- Three areas of significant change:
 - single learner record
 - restructured learner record
 - learner record in XML format

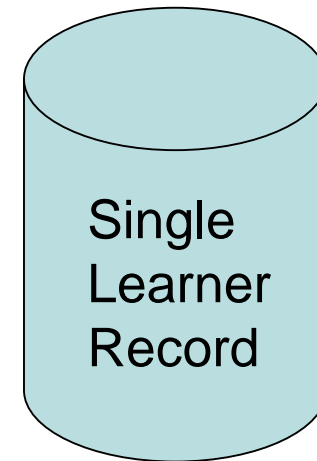
Single Learner Record

ILR



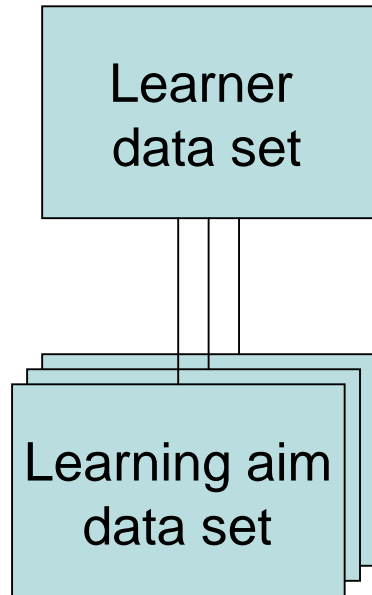
Why?

- frequent provider requests
- recommended by consultants
- endorsed by board
- handle multiply funded learners



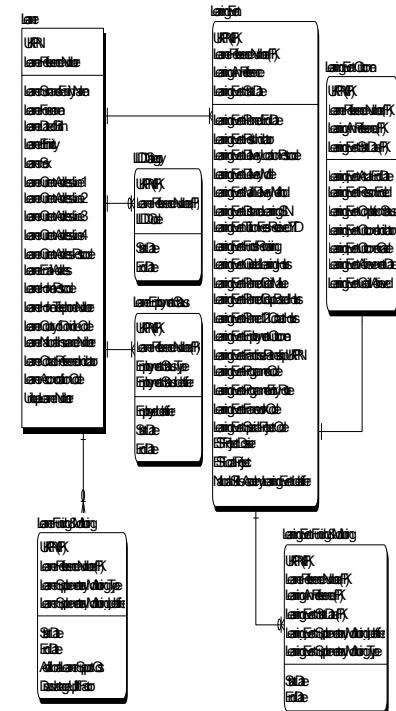
Restructured Learner Record

ILR



Why?

- better reflects data relationships
- easier change - more agile
- simplifies collection
- enables better MI
- enables transactions in future



XML – Extensible Markup Language

ILR

flat file

```
0010,0004,757 of 00 000 02,42,4150,0,200,4052443277770,0,20,20,25,25,00042700100007,3 2000 2004,,
0020,0004,757 of 00 000 02,42,4150,4150,200,4052443277779,200,4052443277779,20,20,25,25,000427001
0030,0007,757 of 00 000 02,38,23504,23504,2702,5340402671642,2702,5340402671642,36,1875,36,1875,58,2
10300,0000,757 of 00 000 00,36,0000,0000,273,7453277700000,273,7453277700000,18,25,18,25,26,0700753
10400,0006,757 of 00 000 00,36,5000,5000,273,7453277766666,273,7453277766666,18,25,18,25,26,0700753
10500,0000,36,0,0,0,18,25,18,25,26,07007530004000,0,3 2000 2004,, * 2003 4:10PM,2,
10600,0000,757 of 00 000 00,36,23507,23507,2551,0000000077350,2551,0000000077350,36,1875,36,1875,58,2
10700,0004,757 of 00 000 00,36,23059,0,2348,792020200007,0,50,50,38,25,0,3 2000 2004,, * 2003 4:10PM,2
10706,0000,757 of 00 000 00,36,23650,23650,2568,4302265246636,2568,4302265246636,36,1875,36,1875,58,2
10900,0000,757 of 00 000 00,36,23059,23059,2508,4302265246636,2508,4302265246636,36,1875,36,1875,58,2
11000,0000,757 of 00 000 00,36,23650,23650,2568,4302265246636,2568,4302265246636,36,1875,36,1875,58,2
11100,0000,757 of 00 000 00,36,23007,23007,2551,0000000077350,2551,0000000077350,36,1875,36,1875,58,2
11200,0004,757 of 00 000 00,36,23007,23007,2551,002305120337,2551,002305120337,50,50,58,25,58,06204
11300,0004,757 of 00 000 00,36,23007,23007,2551,002305120337,2551,002305120337,50,50,58,25,58,06204
11400,0000,757 of 00 000 00,36,23304,23304,2509,0420722223,2509,0420722223,50,50,58,25,58,06204543757
11500,0000,757 of 00 000 00,36,23304,23304,2509,0420722223,2509,0420722223,50,50,58,25,58,06204543757
11600,0000,757 of 00 000 00,36,23304,23304,2509,0420722223,2509,0420722223,50,50,58,25,58,06204543757
11700,0000,757 of 00 000 00,36,23304,23304,2509,0420722223,2509,0420722223,50,50,58,25,58,06204543757
11800,0004,757 of 00 000 00,36,23650,23650,2548,700020200007,2548,700020200007,50,50,58,25,58,24003
11900,0004,757 of 00 000 00,36,23059,23059,2548,700020200007,2548,700020200007,50,50,58,25,58,24003
12000,0004,757 of 00 000 00,36,23650,23650,2548,700020200007,2548,700020200007,50,50,58,25,58,24003
12100,0000,757 of 00 000 00,36,23059,23059,2508,4302265246636,2508,4302265246636,36,1875,36,1875,58,2
12200,0007,757 of 00 000 00,36,23650,23650,2874,521530400110,2874,521530400110,40,5,40,5,58,06215,58
12300,0007,757 of 00 000 00,36,23304,23304,2500,200070423700,2500,200070423700,36,1875,36,1875,58,2
12400,0002,757 of 00 000 00,36,23304,23304,2537,5422066216671,2537,5422066216671,50,50,58,25,58,25003
12500,0002,757 of 00 000 00,36,23304,23304,2537,5422066216671,2537,5422066216671,50,50,58,25,58,25003
12600,0002,757 of 00 000 00,36,23304,23304,2537,5422066216671,2537,5422066216671,50,50,58,25,58,25003
12700,0007,757 of 00 000 00,36,23304,23304,2500,200070423700,2500,200070423700,36,1875,36,1875,58,2
12800,0002,757 of 00 000 00,36,23304,23304,2565,400087367121,2565,400087367121,40,5,40,5,58,06215,58
12900,0000,757 of 00 000 00,36,23304,23304,2565,400087367121,2565,400087367121,40,5,40,5,58,06215,58
```

Why?

- automate change processes
- industry standard
- reduce maintenance costs
- align with HE and school collection
- comply with e-Gif

XML

```
<?xml version="1.0"
encoding="utf-8"?>
<!-- This file was
generated by W3C
XML/XSD Export
Model Bridge from
Meta Integration
Technology, Inc.
(MITI) -->
<xs:schema
xmlns:xs="http://www.
w3.org/2001/XMLSche
ma" xmlns="">
<xs:complexType
name="Learner">
<xs:annotation>
```

the
informatiⁱon
authority

Single ILR Documents

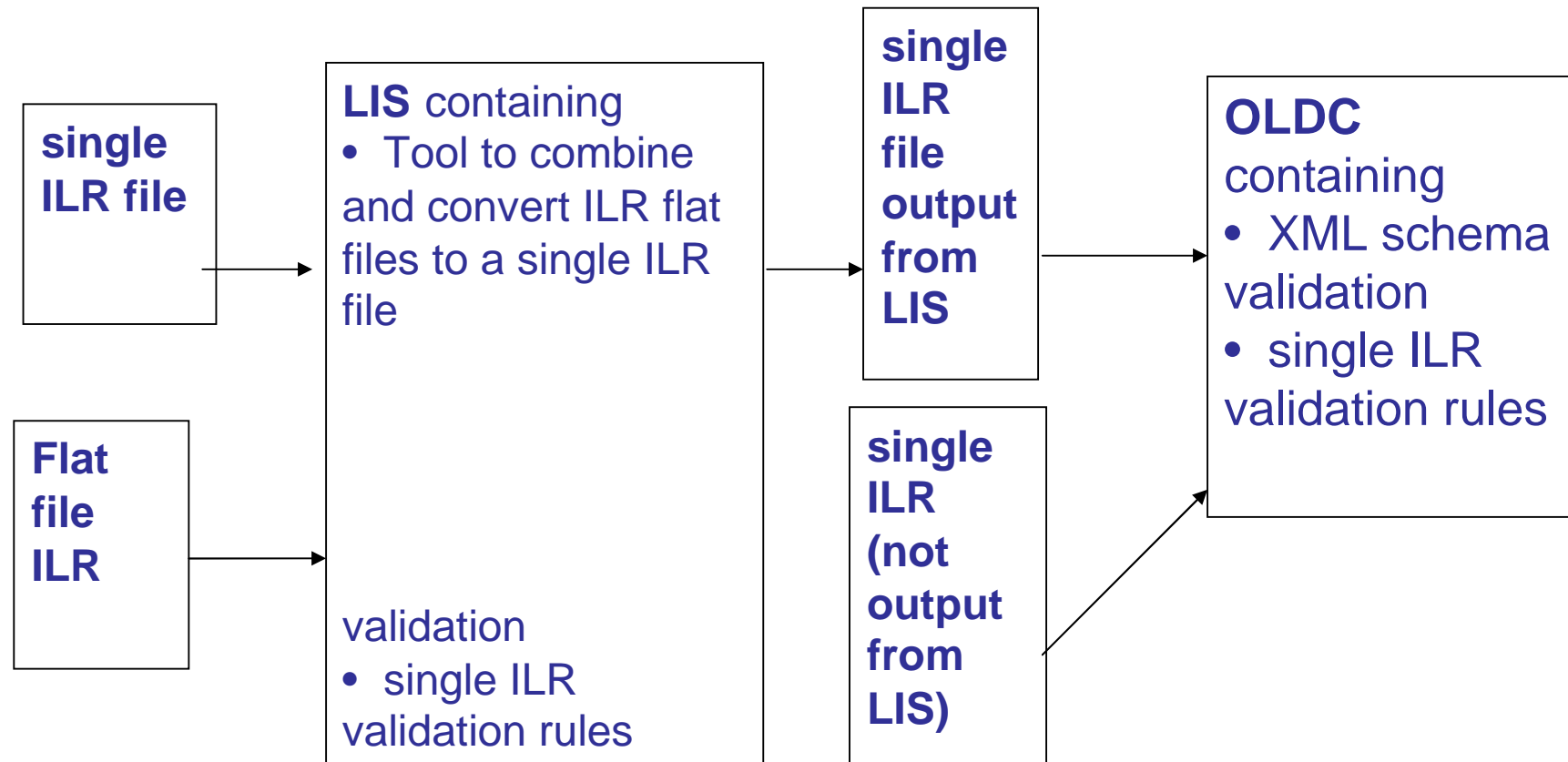
- version 2 of flat file ILR specification published at end of February 2011 to include late ILR changes
- single ILR specification and XML schema published at end of February 2011
- single ILR specification, XSD and business rules updated with corrections on 14 April 2011
- Mapping document from flat file to new field structure on IA website
- Provider support manual to be published next week (by 17 June)

Single ILR Implementation (1)

- implementation for providers during 2011/12
- provider prepares data in current flat file ILR format or single ILR format
- the data that providers are asked to collect for 2011/12 is the same regardless of the output format
- enhanced LIS provides functionality to support move to single ILR
 - ILR flat file to single ILR converter tool - will combine and convert separate ILR flat files to a single ILR file, as well as merge two or more files in either format into one single ILR file.
- all 2012/13 returns in single ILR format

Single ILR

Data collection systems for 2011/12



Single ILR Implementation (2)

- no separate collections during year
- single year end hard close date
- collection timetable will:
 - identify the date by which data must be up to date
 - describe the purpose of the return
 - define for which learners data must be sent
- all data stored in a year to date database

Single ILR Implementation (3)

Providers can send :

- full returns containing all learners (A file)
- update only files containing a subset of learners (B file)
- using only one transmission method. Providers using both POL and batch will need to move to batch only transmission for 2011/12

Single ILR

Key messages for providers (1)

- send one file for 2011/12 containing all learners at the provider regardless of funding model
- need to nominate one function only to be responsible for merging and transmitting all files to OLDC
- careful management of file transmission numbers is required, particularly when merging files

Single ILR

Key messages for providers (2)

- if records for a learner are currently included in more than one collection with different learner reference numbers the two records for 2011/12 can be:
 - merged together to form a single learner record, or
 - held as separate records
- duplicate learner reference numbers must be cleansed for 2011/12, that is, the same number cannot be used for more than one learner

Single ILR

Key messages for providers (3)

- any changes made to learner reference numbers must be reported to the Data Service (old to new mapping for success rates)
- an A file will always replace all learner data for the provider – so make sure this contains all learners
- need to understand single ILR even if you input ILR flat files into LIS as:
 - data in the LIS will be stored in single file format
 - validation will be reported in single file terminology

Future development

- make more use of XML functionality
- the single ILR data model and XML can more easily accommodate future changes
- simplification from the Skills Funding Agency expected in 2012/13
- [2012/13 ILR change request process](#) is open

Learner Information Suite (LIS)

- Enhancements include:

- to use a business rules engine module, to enable greater flexibility in the maintenance of the funding calculation and synchronisation with the OLDC system.
- functionally to convert existing flat file format ILR to a single ILR file as well as merge two or more files in either format into one single ILR file.
- validate both single ILR and flat format ILR files
- LIS reports - updated in line with any policy changes

LAD → LARA

- Replacement of LAD with new Learning Aims solution to support an enhanced Learning Aims Lifecycle.
- LARA – Learning Aim Reference Application.
- Learning Aims data in a new format that provides:
 - Learning Aims for the 2011/12 academic year
 - Ability to import data from authorised sources (Ofqual, DfE, UK-CES, QAA, HEFCE, awarding organisations, learning providers)
- New look and feel, new location.
- Increase system flexibility as well as lowering ongoing maintenance cost by reducing the dependence of bespoke technology.

LAD – will hold historic data

- **LAD will continue to be available for at least the next 2 years**
- LAD and the LAD archive will continue to be available at the current location.
- No changes to LAD planned – Learning Aims for 09/10 and 10/11 will continue to be made available via the LAD website.
- LAD search will continue to be available for 09/10 and 10/11 Learning Aims.
- For a few months LAD will continue to be updated to support 2010/11.
- Funding and validity information for 2011/12 will be made available on the LAD

LARA – masters aims for 11/12 onwards

- **LARA will be the repository for learning aims from 2011/12 onwards**
- New database definition for LARA – LARA table and field definitions for 2011/12 document – draft published on **01 March 2011**.
- LARA structure will be based on LAD database.
- Data not relevant to the 11/12 data collection will be removed.
- New data will be added to cater for:
 - Changes to the Agencies' funding systems
 - Units as Learning Aims
 - More transparency in the progress of a Learning Aim
- LARA download for 11/12 and future years will be available from a new location.
- LARA search will be available from a new location.
- Current plan is to have a live populated system in **July 2011**.

Further information

Email: cst@theia.org.uk

For the single ILR specification, data model and mapping document:

http://www.theia.org.uk/ilr/ilrdocuments/201112_ilrdetail.htm

Further information on the enhancements to data collection systems:

http://www.thedataservice.org.uk/News/enhancements_dc_systems