

Single Restructured Learner Record

Data Users' Group

27 January 2011

Peter Ashton – Standards and Quality Manager

the
informatⁱon
authority

setting data standards
for further education

Summary

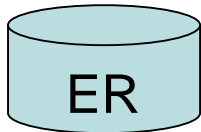
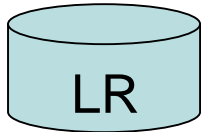
- a single restructured learner record in XML (SRLR)
- implementation of the SRLR
- next steps
- further information

A single restructured learner record in XML format

- Three areas for significant change:
 - single learner record
 - restructured learner record
 - learner record in XML format

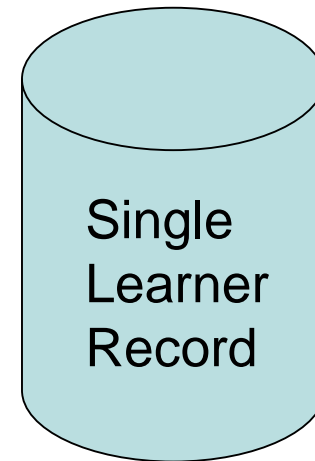
Single Learner Record

ILR



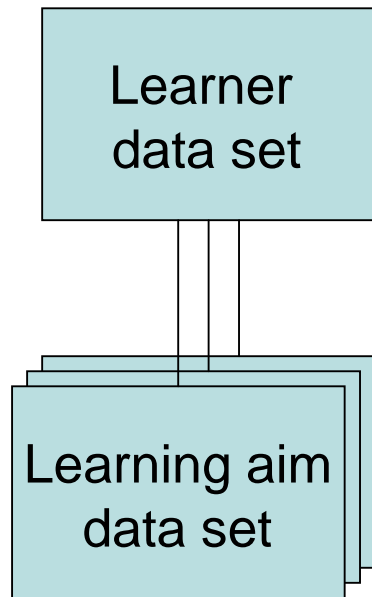
Why?

- frequent provider requests
- recommended by consultants
- endorsed by board
- handle multiply funded learners



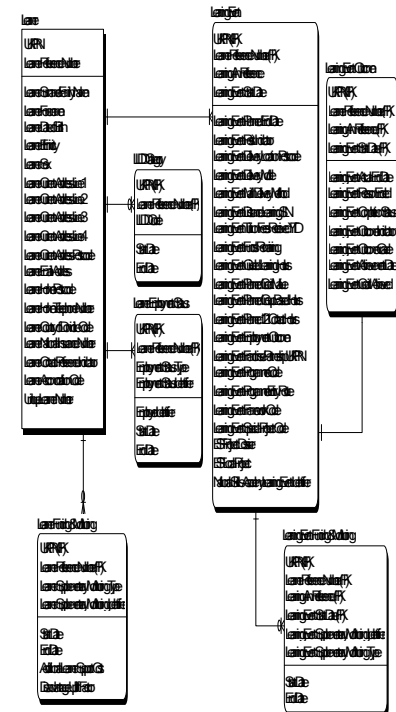
Restructured Learner Record

ILR



Why?

- better reflects data relationships
- easier change - more agile
- simplifies collection
- enables better MI
- enables transactions in future



Implementation (1)

- implementation for providers during 2011/12
- providers will be consulted about the timing of the move from current flat format files to SRLR format for 2011/12. Suggestion that all 2011/12 returns from 1 May 2012 must be in SRLR format
- all 2012/13 returns in SRLR format

Implementation (2)

- online data collection system handles only data in SRLR format;
- LIS capable of reading files in both current flat file ILR format and new SRLR format
- LIS to have a tool to combine and convert ILR flat files into SRLR XML format
- provider prepares data in current flat file ILR format or SRLR format;
- provider preparing data in SRLR format encouraged to use the LIS software, but could send its data directly to OLDC

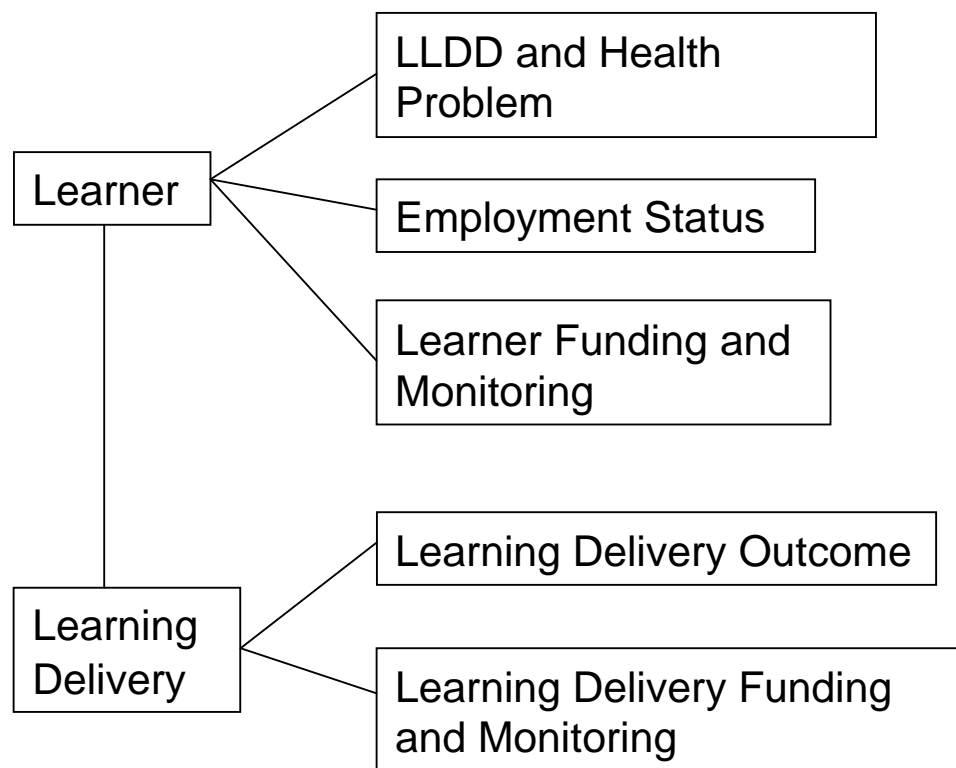
Progress and Plans (1)

- design authority established to authorise main decisions and principles – has met 3 times
- provider consultation with IA provider groups
- working closely with MIS suppliers
 - initial workshops undertaken in November 2010
 - early sight of draft SRLR specification at end Dec 2010
 - further meetings in January and February 2011

Progress and Plans (2)

- version 1 of flat file ILR specification published in Dec 2010
- version 2 of flat file ILR specification will be published at end of Feb 2011 to include late ILR changes
- produce SRLR specification and XML Schema for providers by end of Feb 2011
- the data that providers will be asked to collect for 2011/12 will be the same regardless of the output format used

Data Model



Learner may have zero or one LLDD and Health Problem record

Learner may have zero, one or many Employment Status records

Learner may have zero, one or many FAM records

Learning delivery must have one outcome record when learning has ended

Learning delivery may have zero, one or many FAM records

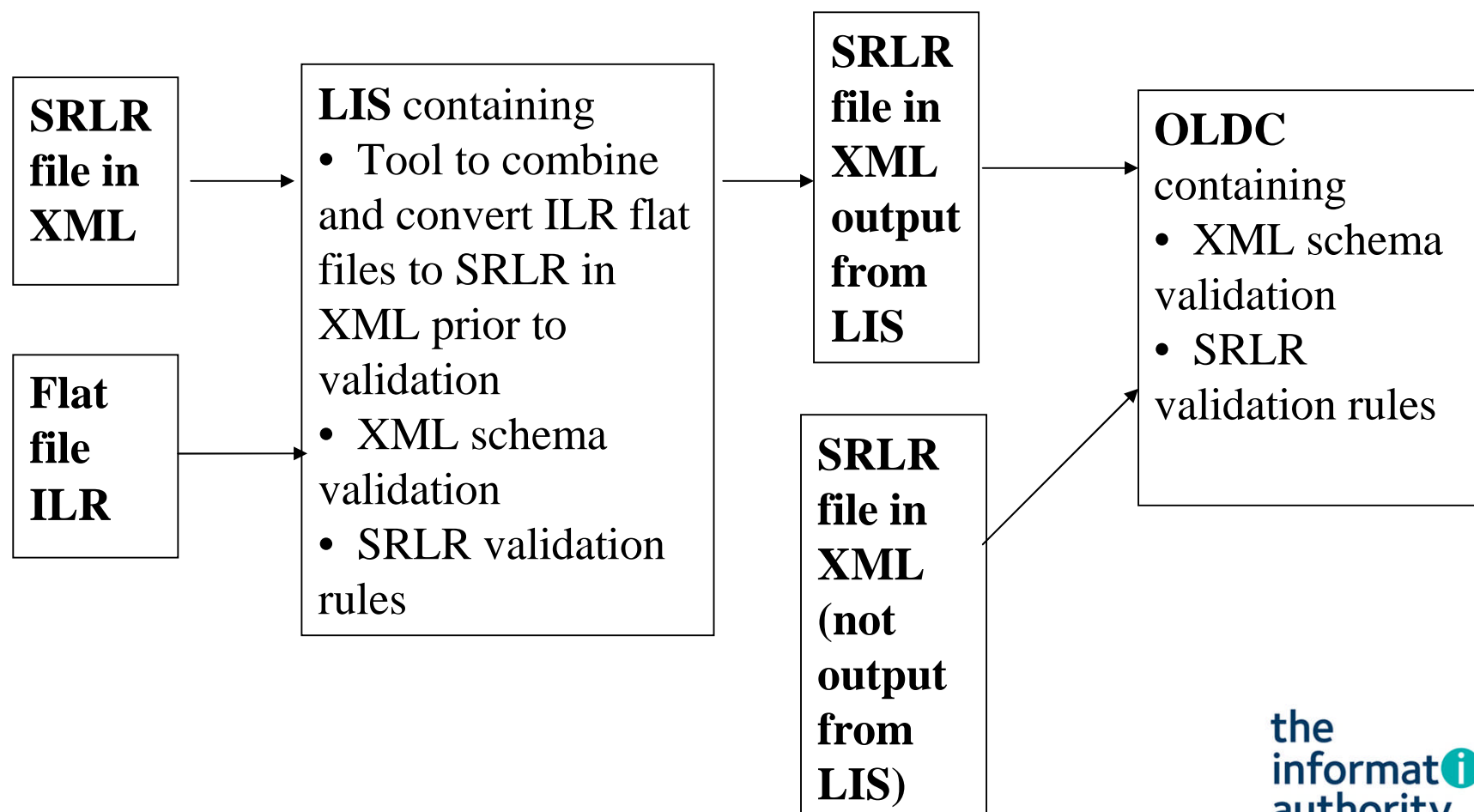
Basic principles for data collection (1)

- No separate collections during year. Likely to be single year end hard close for all.
- Provider can send data at any time – either full returns containing all learners or update only files for subset of learners
- IA collection timetable will define when data must be sent for certain groups of learners. Requirements from funding agencies being gathered now. To be approved by IA board at start of March

Basic principles for data collection (2)

- Data service will define and publish dates for data freezes, content of freezes and purpose
- Data specification will continue to apply to a single academic year. IA will continue to operate annual change process cycle to similar timetable as now

Data collection systems for 2011/12



Keeping in touch

- Visit our web-site – contribute to comments and feedback: www.theia.org.uk
- Visit **feconnect** - the online network for those working with data in the FE system: forums.theia.org.uk
- Contact CST@theia.org.uk with ideas and contributions
- Subscribe to the “Inform” newsletter
(email informnewsletter@theia.org.uk.)